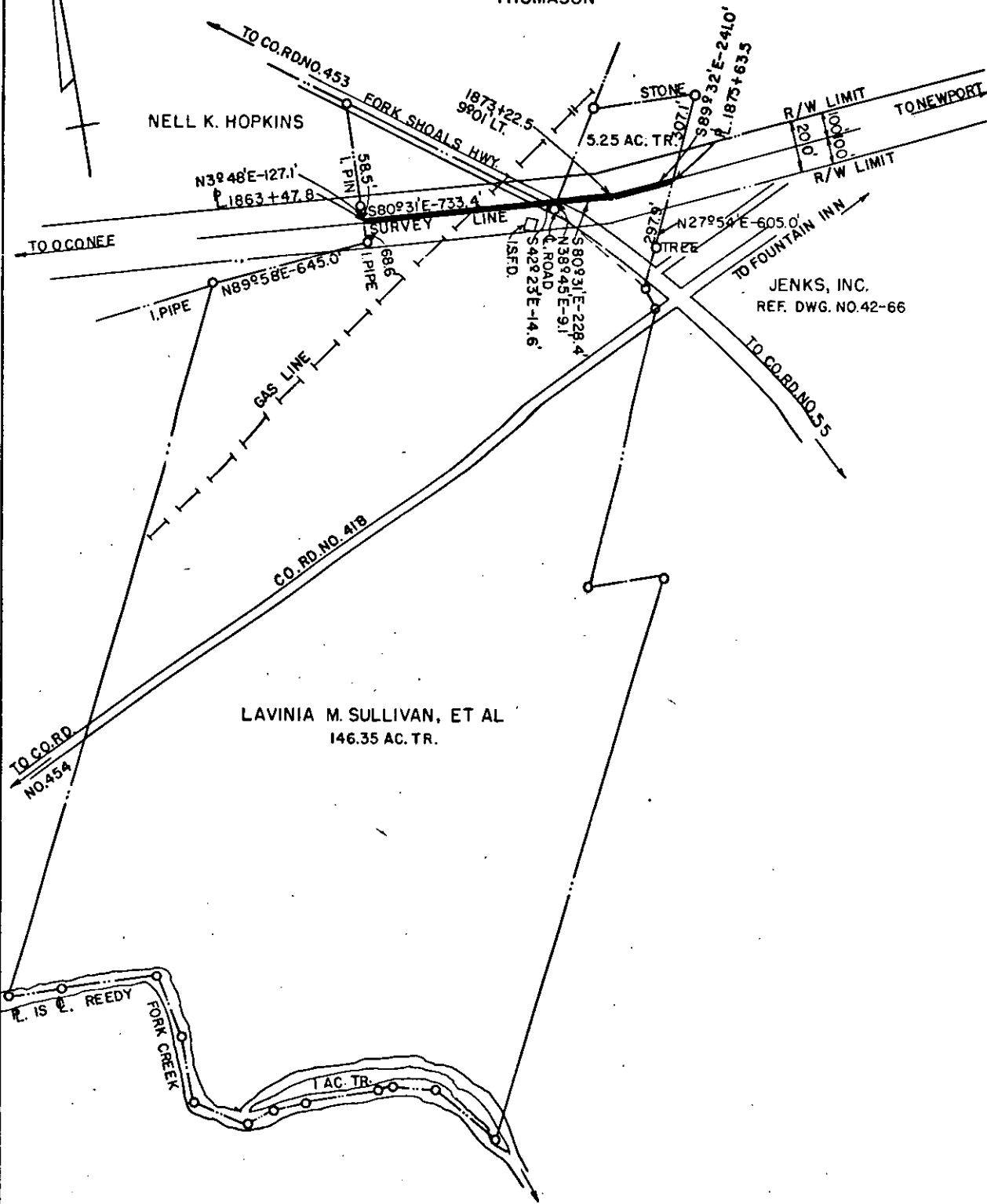


CORA BELLE & BELTON  
THOMASON



LAVINIA M. SULLIVAN, ET AL  
146.35 AC. TR.

JENKS, INC.  
REF. DWG. NO. 42-66

DUKE POWER COMPANY  
OCONEE-NEWPORT  
TRANSMISSION LINE  
CROSSING PROPERTY OF  
LAVINIA M. SULLIVAN, ET AL  
OAKLAWN TOWNSHIP  
GREENVILLE CO. S.C.

Recorded June 24, 1969 At 10:31 A.M. # 30612

T.O. 7075-146

SCALE: 1" = 500'  
BOOKS NO. 1080 & 1081

JAN. 9, 1969  
FILE NO. 42-96